



# QUALITY OF LIFE IN PATIENTS WITH TYPE 2 DIABETES MELLITUS

## CALIDAD DE VIDA EN PACIENTES CON DIABETES MELLITUS TIPO 2

Nicole Solange Cadenillas-Maguiña <sup>1a</sup>, Mayra Alejandra Rosas-Castillo <sup>1a</sup>, Marisa Esperanza Morillas <sup>1b</sup>,  
Evanilda Souza de Santana Carvalho <sup>1b 3c</sup>, Kattia Ochoa-Vigo <sup>1b 2c</sup>

### ABSTRACT

**Introduction:** Type 2 diabetes mellitus in the Americas affects approximately 62 million people, recognized as the most common chronic disease in the countries. It is estimated that by 2030, population growth, aging, urbanization and changes in lifestyles will lead to a 54% increase in diabetes, with a significant impact on quality of life. **Objective:** Determine the level of quality of life of patients with type 2 diabetes mellitus, Province of Barranca, Lima-Peru Region. **Methods:** Observational study and descriptive design. The population was 242 patients attending a public hospital, in the province of Barranca, with a random sample of 144 patients. Data collection was carried out in the second quarter of 2021, through interviews using the WHOQOL-BREF questionnaire. Data analysis was carried out with SPSS v.24 software. **Results:** 69% of patients were women, aged between 40-64 years and an average of 58 years. The quality of life was of a medium level (86%), with the social dimension being valued at a high level (74%), while the physical dimension was valued at a low level (64%). When analyzed by sex, an average quality of life predominated in both, and when grouped by age, those over 65 years of age rated a low quality of life (29%). **Conclusions:** Patients with type 2 diabetes mellitus presented a medium-level quality of life, with the physical dimension valued at a low level, while the psychological and environmental dimensions showed a medium level.

**Keywords:** Diabetes mellitus, Outpatient care, Quality of life, Nursing. (Source: MeSH – NLM)

### RESUMEN

**Introducción:** La diabetes mellitus tipo 2 en las Américas afecta aproximadamente a 62 millones de personas, reconocida como la enfermedad crónica más común en los países. Se estima que al 2030, el crecimiento de la población, envejecimiento, urbanización y los cambios en estilos de vida conducirían a un incremento de 54% de la diabetes, con impacto importante en la calidad de vida. **Objetivo:** Determinar el nivel de calidad de vida de pacientes con diabetes mellitus tipo 2, Provincia de Barranca, Región Lima-Perú. **Métodos:** Estudio observacional y diseño descriptivo. La población fue de 242 pacientes asistentes a un hospital público, en la provincia de Barranca, con una muestra aleatoria de 144 pacientes. La recolección de datos se realizó el segundo trimestre-2021, mediante entrevistas utilizando el cuestionario WHOQOL-BREF. El análisis de datos se efectuó con el software SPSS v.24. **Resultados:** El 69% de pacientes era de mujer, con edades entre 40-64 años y una media de 58 años. La calidad de vida fue de nivel medio (86%), valorándose la dimensión social en nivel alto (74%), mientras que la física fue valorada con nivel bajo (64%). Al analizar por sexo, en ambos predominó una calidad de vida media, y al agrupar por edad, los mayores de 65 años calificaron en una calidad de vida baja (29%). **Conclusiones:** Los pacientes con diabetes mellitus tipo 2 presentaron una calidad de vida de nivel medio, siendo la dimensión física valorada con nivel bajo, mientras que la psicológica y ambiental mostraron un nivel medio.

**Palabras clave:** Diabetes mellitus; Atención ambulatoria; Calidad de vida; Enfermería. (Fuente: DeCS- BIREME)

<sup>1</sup> DE JESUS UROMEDIC-Centro Especializado en Urología, Barranca, Región Lima-Perú.

<sup>2</sup> Universidad Nacional de Barranca, Barranca, Lima-Peru Region.

<sup>3</sup> Universidade Estadual de Feira de Santana, Feira de Santana, Bahia-Brazil.

<sup>a</sup> Nurse Assistant.

<sup>b</sup> Master in Psychology.

<sup>c</sup> PhD in Nursing.

Cite as: Cadenillas-Maguiña NS, Rosas-Castillo MA, Morillas ME, Souza de Santana Carvalho E, Ochoa-Vigo K. Quality of life in patients with type 2 diabetes mellitus. Rev Fac Med Hum. 2024;24(3):62-70. doi:10.25176/RFMH.v24i3.6625

Journal home page: <http://revistas.urp.edu.pe/index.php/RFMH>

Article published by the Journal of the Faculty of Human Medicine of the Ricardo Palma University. It is an open access article, distributed under the terms of the Creative Commons License: Creative Commons Attribution 4.0 International, CC BY 4.0 (<https://creativecommons.org/licenses/by/4.0/>), which allows non-commercial use, distribution and reproduction in any medium, provided that the original work is duly cited. For commercial use, please contact [revista.medicina@urp.edu.pe](mailto:revista.medicina@urp.edu.pe)





## INTRODUCTION

Diabetes mellitus (DM) is a chronic disease of global scope that continues to increase alarmingly, affecting millions of people worldwide, due to changes in lifestyles, the increase in obesity, together with population aging and urbanization<sup>(1)</sup>. Alqurashi et al.<sup>(2)</sup> reported in their study that 30% of the population had diabetes, with a notable difference in prevalence between men and women, with a greater impact on men (34.1%).

In developed countries, DM affects older people, whereas in developing countries, the incidence increases among middle-aged people. This demographic difference may persist in the future<sup>1</sup>, representing a public health problem for all countries, due to the high costs of treating its long-term complications<sup>(3,4)</sup>. In Latin America, the situation is also worrying, with a significant increase in the prevalence of type 2 diabetes and shocking figures of associated mortality. Between 2010 and 2020, 601 521 deaths related to DM were registered in Brazil and strongly associated in places with worse social indicators<sup>(4)</sup>; recent study in Brazil indicates an overall prevalence of 24%<sup>(5)</sup>. In Mexico the prevalence was 18.3% and 22.1% of the sample presented prediabetes<sup>(6)</sup>, likewise, Chile reports a prevalence of 12.3%, reducing this value to 10.2% at the self-report<sup>(7)</sup>.

In the Peruvian context, the General Law for the Protection of People with Diabetes drives the implementation of the National Program for the Prevention and Care of Patients with Diabetes, in order to improve health and their quality of life<sup>(8)</sup>. In 2015, the prevalence reported by PERUDIAB was 7.0% nationally and 8.4% for metropolitan Lima, with a cumulative prevalence of 19.5 cases per thousand people per year<sup>(9)</sup>.

Data from the National Institute of Statistics and Information-INEI-202210<sup>(6)</sup> confirms an increase in the prevalence of DM 9,11,12, reaching 5.1% of the population over 15 years of age, with a greater impact on women, where geographically the Peruvian coast has the highest prevalence. Two new cases are registered for every 100 people per year<sup>(12)</sup>. This fact affects the quality of life of people<sup>(13)</sup>, due to long-term complications, especially microvascular complications, such as diabetic retinopathy, chronic renal failure and diabetic foot, identified as serious threats to physical

and mental health, generating not only a high economic cost but also suffering for families and society as a whole<sup>(14)</sup>.

Studies on quality of life in patients with DM show diverse results. In Mexico<sup>(15,16)</sup>, quality of life was rated as good, although there were concerns about sexual functioning<sup>(15,17)</sup>. In Paraguay, quality of life was rated as poor<sup>18</sup>; another study indicates that patients with type 2 diabetes and renal failure maintained an average quality of life, with a significant impact on the physical dimension<sup>(19)</sup> and relatively good levels in the dimensions of physical health and psychological health<sup>(20)</sup>. These findings underscore the complexity of QoL in patients with type 2 diabetes, with the need for an individualized and multifaceted approach to clinical care and management. However, there is a paucity of data in certain regions and contexts, which highlights the relevance of this study, whose objective was to evaluate the level of quality of life of patients with type 2 diabetes mellitus in a public hospital in the province of Barranca, Lima Region.

## METHODS

### Study design

Study of quantitative approach, observational method, descriptive and cross-sectional design.

### Study area

The study was conducted in a Ministry of Health-MINSA hospital, category II-1, located in the province of Barranca, Lima-Peru region. It has outpatient clinics for general medicine, pediatrics, pneumology, gastroenterology, cardiology, dentistry, otorhinolaryngology, gynecology and obstetrics, psychology and psychiatry, physical therapy and health strategies.

### Population and sample

The population consisted of 242 patients with DM from the health strategy for the prevention and control of noncommunicable diseases. The sample consisted of 144 patients with type 2 diabetes, determined by means of a finite population formula for descriptive studies, with a 95% confidence interval, a probability of success of 64% and an error of 0.05%. The sampling was simple random, using software called random number generator, with replacement of patients in case of rejection.





Inclusion criteria were considered to be age over 40 years, diagnosis of type 2 DM, with a period of illness of no less than two years and regular attendance at the clinic for non-communicable diseases, with voluntary participation.

### Variables and instrument

Quality of life. It is the evaluation of the objective functioning (capabilities, behaviors) and subjective (satisfaction / dissatisfaction) that the person makes about himself<sup>21,22</sup> (16,17). It integrates the following dimensions: physical, psychological, social relations and environment<sup>20</sup>(14). Gender, identified as female and male, according to the biological perception expressed by the participant and the chronological age reported, were also considered as study variables.

The instrument used to assess quality of life was the "World Health Organization Quality of Life (WHOQOL-BREF)", internationally recognized to determine the profile of quality of life perceived by people and applied in different countries, languages and cultures<sup>(23)</sup>. The reliability of the instrument was found to be 0.88 in the Peruvian population<sup>(24)</sup>.

The WHOQOL-BREF is applied to the chronically ill, caregivers, people undergoing stressful situations, children, among other groups<sup>(25)</sup>. Quality of life is rated as low, medium or high, with the higher score representing a better quality of life. In the study, the results were evaluated according to the established algorithm<sup>(25)</sup>.

### Procedure

The process was carried out with prior authorization from the hospital and coordination with the health strategy for the prevention and control of non-communicable diseases, first accessing the personal data of each patient according to the registry.

The data were collected between April-June 2021, with the necessary provisions and instruments in view of the health situation in the country<sup>(27,28)</sup>. Patients were contacted by telephone; each patient was identified

and invited to participate in the study, receiving information on the objective, procedures and concerns. They were also informed of the complete information contained in the informed consent form.

Once all the preliminary information was clear, we proceeded with the application of the questionnaire (via telephone), taking approximately 20-25 minutes.

There were some exceptions to the telephone interview, with those patients for whom it was not possible to establish fluid communication for the completion of the questionnaire. For these patients, a home visit was made (total of 14 patients).

### Data analysis

For the statistical analysis, the data were previously entered into an Excel database using codes to preserve the anonymity of the participants. Then, the data were transported to Statistica Package for Social Sciences-SPSS v24, using descriptive statistics such as measures of central tendency, frequencies, percentages and cross-frequency table.

### Ethical aspects

The project was submitted to evaluation by the institutional ethics committee, respecting the principles of the World Medical Association. Informed consent was given to each participant.

## RESULTS

With respect to the characterization of the sample, Table 1 shows that 70% were aged between 40-64 years; 69% identified themselves as women; 38% were cohabiting and 34% were married; 24% had technical studies and 20% were illiterate.

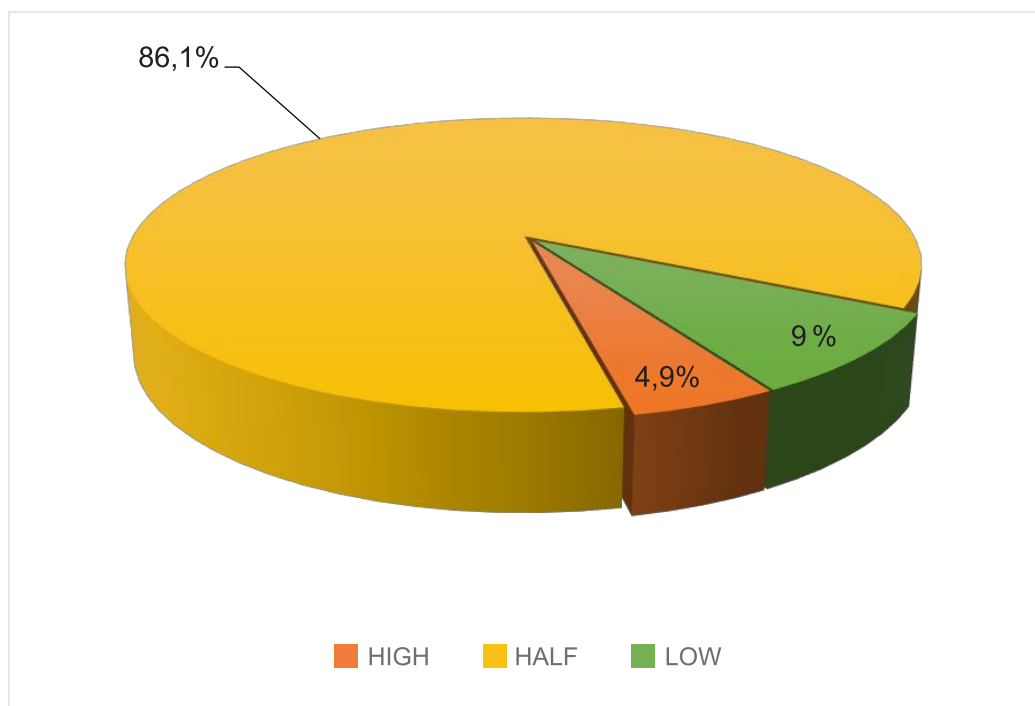
Figure 1 shows the results of the quality of life, with 86% (124 patients) being rated as medium level QoL.

In Figure 2, in the social dimension 74% (107 patients) achieved a high level VC, in the psychological and environmental dimension, the VC was medium level (107 and 104 patients respectively), in the physical dimension, 64% (92 patients) achieved a low level VC.

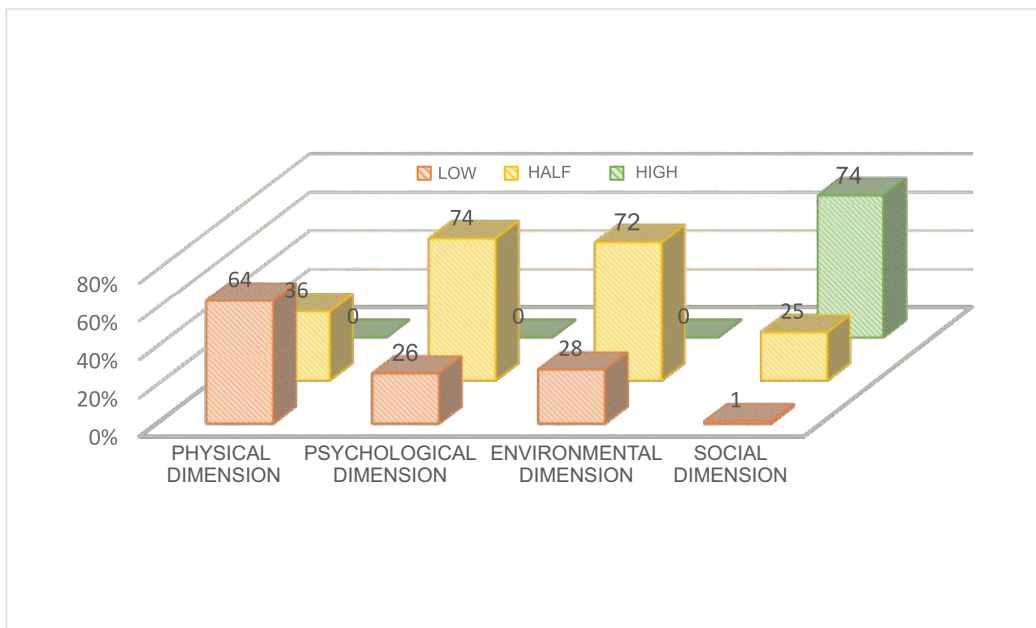
**Table 1.** Demographic characteristics of patients with type 2 mellitus, MINSA Hospital, Barranca province, April-June 2021.

Variable	Category	Frequency	Percentage
Sex	Female	99	68.6
	Male	45	31.3
Ae	40 - 64	102	70.9
	65 - 80	42	29.3
Schooling	Unlettered	29	20.1
	Primary	22	15.3
	Secondary	31	21.5
	Technician	35	24.3
	University	27	18.8
Marital status	Single	11	7.64
	Cohabitant	55	38.2
	Married	49	34.0
	Divorced/widowed	29	20.1

ORIGINAL PAPER



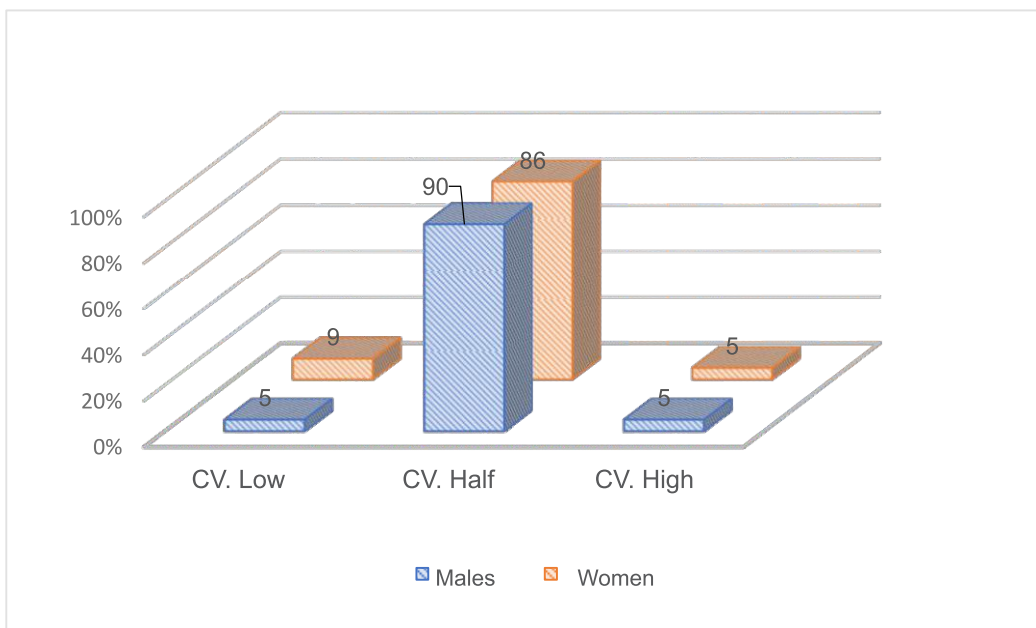
**Figure 1.** Quality of life of patients with type 2 diabetes, MINSA Hospital, Barranca province, April-June 2021.



**Figure 2.** Quality of life of patients with type 2 diabetes by dimensions, MINSA Hospital, Barranca province, April-June 2021.

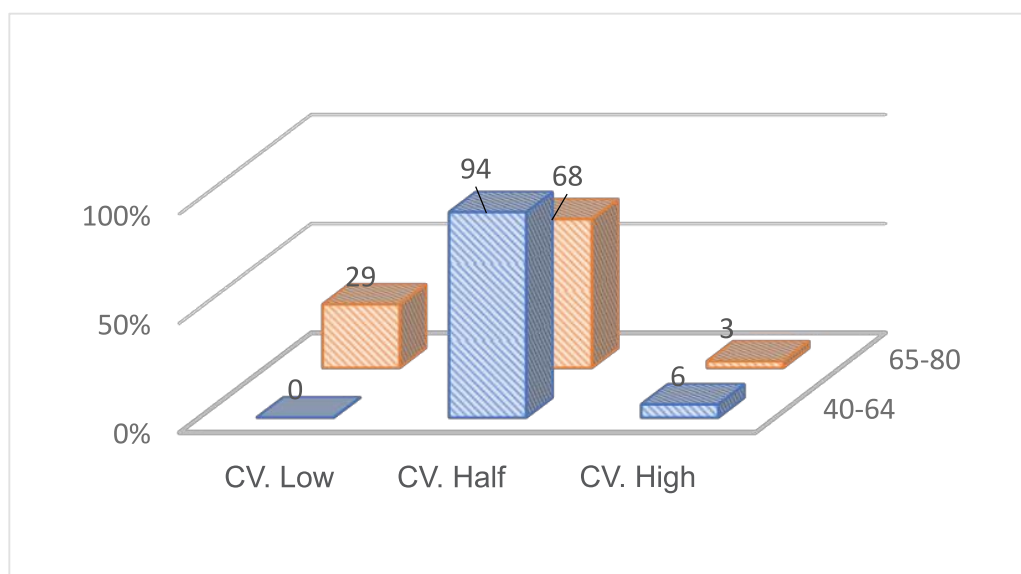
In Figure 3, medium-level QOL predominated in both sexes (90% and 86% in men and women, respectively),

with women perceiving low-level QOL in a higher proportion than men.



**Figure 3.** Quality of life of patients with type 2 diabetes according to sex, MINSA Hospital, Barranca province, April-June 2021.

In Figure 4, patients in the 65-80 years age range presented a low level of QOL (29%), while 94% of the 40-65 years age range perceived a medium level of QOL.



**Figure 4.** Quality of life of patients with type 2 diabetes mellitus according to age group, Laura Esther Rodríguez Dulanto Hospital, Barranca, April-June 2021.

## DISCUSSION

QoL, as a subjective variable, provides a comprehensive perspective of the impact of diseases on people's lives. In the case of type 2 DM, a significant influence on biopsychosocial aspects is observed<sup>(25)</sup>. This statement is based on the difficulty patients face in maintaining a healthy diet, the lack of frequent physical activity and the prevalence of overweight in this group<sup>(25)</sup>.

The World Health Organization (WHO) supports this concern, given the alarming increase of patients diagnosed with type 2 DM worldwide. In 2014 there were 422 million cases, and by 2019, type 2 DM was positioned as the ninth leading cause of death, with 1.5 million deaths attributed to this disease<sup>(30)</sup>. Figures that underline the urgency that represents in public health for type 2 DM, not only in terms of mortality, but also in terms of its negative impact on the health and QoL of those affected<sup>25</sup>. As shown by several studies<sup>(15-20)</sup>.

Certainly, QoL is a term with multiple definitions, since each construction is influenced by the social and cultural environment; a context that conditions the

behavior of people, where objective and subjective factors are combined and that will have an impact on one's own life. When old age arrives, changes in lifestyle inevitably occur, which in turn alter the QoL, in addition to the presence of a disease and the complications it brings with it<sup>(21)</sup>.

The findings of the study highlight the need for effective interventions at a global level for people with diabetes, addressing both the medical and socioeconomic aspects associated with this disease<sup>(31)</sup>. The study highlights the public health context experienced in the country during the COVID-19 pandemic, when attention to non-communicable diseases in health services was reduced or suspended as a control measure. This may have aggravated the situation of patients. When analyzing QoL with the variables sex and age group, the results reveal that both men and women, as well as in the different age groups, QoL was of medium level (Figure 3, 4), although this could vary when considering the time of the disease and the capacity for self-care. This perspective shows



the importance of promoting self-care as a key strategy to improve health and prevent chronic diseases, which could raise the level of QoL, both at the individual and community level<sup>(17,20)</sup>. In terms of QoL dimensions, there is greater affectation in the physical dimension, followed by the psychological, environmental and social dimensions (Figure 2). Reflecting the complexity of the experience of living with type 2 DM, which not only involves physical, but also emotional, social and environmental challenges. There is an urgent need for a multidisciplinary and intersectoral approach in the therapeutic approach, which goes beyond glycemic control and integrates psychosocial support, promotion of healthy lifestyles and improved access to medical care<sup>(32)</sup>.

The study highlights the social relationships, the environment and the health care received during the COVID-19 pandemic. Varillas<sup>(19)</sup> reported patient dissatisfaction in sexual life, as a consequence, of the antidiabetic treatment; despite the fact that most of them presented a high level CV; living with a partner, seems to positively influence CV, although this does not translate into sexual satisfaction<sup>(33)</sup>.

In the environment-environment, most patients reported living in satisfactory conditions and having economic resources to cover their basic needs, as did the findings of Guzmán et al<sup>(17)</sup>. However, the lack of opportunities for leisure activities reveals a limitation in QoL. The analysis by dimensions of QoL offers valuable information to health personnel, where it is important to include the family, and thus involve them in the process of patient care and treatment<sup>(34)</sup>. Law N°28553<sup>(8)</sup>, designed to protect people with diabetes and improve their QoL, still seems to be deficient in the Peruvian health system. The analysis of QoL by age group revealed (Figure 4) a greater deterioration in people over 65 years of age, possibly attributed to the wear and tear and complications associated with diabetes over the years, as well as to the presence of multiple chronic degenerative diseases<sup>(15)</sup>. The multidisciplinary and intersectoral approach to DM should prioritize the first

level of care, where primary care professionals play a fundamental role, strengthening prevention and health promotion interventions in families and at-risk groups. Comprehensive and preventive care contributes significantly to the QoL and well-being of patients, thus helping to control the disease, delay complications and reduce the impact on public health<sup>(35)</sup>.

To achieve this purpose, it is necessary to expand multiprofessional teams at the primary care level in order to comply with primary care policies. There is a high deficit of personnel and infrastructure at this level of care, given the demographic and epidemiological changes that have been occurring in middle and low-income countries, such as Peru. It is necessary, the confluence of policies and greater investment in health at this level, in order to control and reduce non-communicable diseases, which are the cause of premature deaths in the population.

The scarcity of updated information highlights the importance of continuing to explore QoL in patients with diabetes and to apply more effective interventions considering its associated factors, such as home accompaniment, glucose monitoring and self-care practices, including healthy diet, use of hemoglucoest, care and prevention of diabetic foot, participation in recreational activities, in addition to strict medical check-ups every 90 days. Need for an increase in the health budget at the central level. Among the limitations recognized in the study is memory and attention bias, particularly due to the nature of the telephone interviews. The lack of face-to-face interaction and the limited time of the calls may have influenced the quality of responses and the accuracy of the information collected.

In conclusion, the importance of identifying areas of intervention and the need for public health policies and programs that respond to the specific needs of this vulnerable population is highlighted. Despite the limitations, the study findings may guide future research and clinical practice in the field of type 2 DM.

**Authorship contributions:** NSCM, MARC and KOV have participated in the conception of the article, data collection, analysis and interpretation, writing and approval of the final version. In addition, MEM and ESSC have participated in the drafting, critical review and approval of the final version.

**Funding:** Self-funded.

**Conflict of interest:** The authors declare no conflicts of interest.

**Received:** May 07, 2024.

**Approved:** June 30, 2024.

**Correspondence:** Kattia Ochoa-Vigo.

**Address:** Calle Jonh Neper 104, Dpto. 303 Urb. San Borja Sur, Lima 41. Perú.

**Telephone:** (+51) 995920067

**Email:** [kochoa@unab.edu.pe](mailto:kochoa@unab.edu.pe)

## REFERENCES

- Shaw JE, Sicree RA, Zimmet PZ. Global Estimates of the Prevalence of Diabetes for 2010 and 2030. *Diabetes Res Clin Pract* [Internet]. 2009; [cited 2021 Jun 10]; 87(1): 4-14. Available from: <https://n9.cl/tn8yu>
- Alqurashi KA, Aljabri KS, Bokhari SA. Prevalence of diabetes mellitus in a Saudi community. *Ann Saudi Med* [Internet]. 2011 Jan-Feb; [cited 2020 Jun 10]; 31(1): 19-23. Available from: <https://n9.cl/020w>
- Elhadd TA, Al-Amoudi AA, Alzahrani AS. Epidemiology, clinical and complications profile of diabetes in Saudi Arabia: a review. *Ann Saudi Med* [Internet]. 2007; [cited 2019 Jun 10]; Jul-Aug; 27(4): 241-250. Available from: <https://n9.cl/0v9lf>
- Lima RAD, Istilli PT, Teixeira CRS, Zanetti ML, Torquato MDTCCG. Diabetes mellitus mortality in a municipality in the state of São Paulo, 2010 to 2014. *Rev Saude Publica* [Internet]. 2019 Feb; [cited 2020 Jun 10]; 53:24. Available from: <https://n9.cl/fn89>
- Reis RCP, Duncan BB, Malta DC, Iser BPM, Schmidt MI. Evolution of diabetes in Brazil: prevalence data from the 2013 and 2019 Brazilian National Health Survey. *Cad Saude Publica* 2022, 38 (Sup 1)
- Basto-Abreu A, López-Olmedo N, Rojas-Martínez R, Aguilar-Salinas CA, Moreno-Banda GL, Carnalla M, Rivera JA, Romero-Martínez M, Barquera S, Barrientos-Gutiérrez T. Prevalencia de prediabetes y diabetes en México: Ensanut 2022. *Salud Publica Mex*. 2023 Jun 13;65:s163-s168. Spanish. doi:10.21149/14832.
- Montenegro RP, Astorga EC, Pedraza LJ, Aguilar DJ, Contreras MB. Situación epidemiológica de la diabetes mellitus tipo 2 en Chile entre los años 2002 y 2019. *Rev Confluencia* 2023, 6(1): 70-75. <https://revistas.udd.cl/index.php/confluencia/article/view/915>
- Ley General N° 28553. Ley General de Protección a las Personas con Diabetes. [Internet]. Lima: El Congreso de la República; 2005 [Citado 19 jun 2020]. Disponible en: <https://www.ncbi.nlm.nih.gov/pmc/articles/PMC6390689/pdf/1518-8787-rsp-53-24.pdf>
- Seclen SN, Rosas ME, Arias AJ, Huayta E, Medina CA. Prevalence of diabetes and impaired fasting glucose in Peru: report from PERUDIAB, a national urban population-based longitudinal study. *BMJ Open Diabetes Research and Care*, 2015;3:e000110. doi:10.1136/bmjdr-2015-000110
- INEI. Perú: Enfermedades No Transmisibles y Transmisibles, 2022 [Internet]. Lima: Instituto Nacional de Estadística e Informática; 2023 [citado 20 abr 2024]. Disponible en: <http://www.gob.pe/institucion/inei/informes-publicaciones/4233635-peru-enfermedades-no-transmisibles-y-transmisibles-2022>
- Ruiz-Alejos A, Carrillo-Larco RM, Miranda JJ, Anderson CAM, Gilman RH, Smeeth L et al. Addressing the impact of urban exposure on the incidence of type 3 diabetes mellitus: The PERU MIGRANT Study. *Scientific Reports*, 2018, 8:5512. DOI:10.1038/s41598-018-23812-6
- Carrillo-Larco Rodrigo M, Bernabé-Ortiz Antonio. Diabetes mellitus tipo 2 en Perú: una revisión sistemática sobre la prevalencia e incidencia en población general. *Rev. perú. med. exp. salud publica* [Internet]. 2019 Ene [citado 2024 Jul 01]; 36(1): 26-36. Disponible en: [http://www.scielo.org.pe/scielo.php?script=sci\\_arttext&pid=S1726-46342019000100005&lng-es](http://www.scielo.org.pe/scielo.php?script=sci_arttext&pid=S1726-46342019000100005&lng-es). <http://dx.doi.org/10.17843/rpmpesp.2019.361.4027>.
- Vicente SBM, Zerquera TG, Peraza AD, Castañeda AE, Irizar HJL, Bravo VT. Calidad de vida en el paciente diabético. *MediSur* [Internet]. 2008; [Citado 27 jun 2019]. 6(3): 226-232. Disponible en: <https://n9.cl/nah15>
- Organización Mundial de la Salud [Internet]. Estados Unidos de América: World Health Organization; 2016; [Citado 10 jun 2020]. Disponible en: <https://n9.cl/nhrp>
- Cortez LJE. Calidad de vida en pacientes con diabetes mellitus tipo 2 adscritos al grupo diabetimss de la umf no. 33 "El rosario". [Internet]. México: Universidad Autónoma de México. 2019. [Citado 25 oct 2022]. Disponible en: <https://acortar.link/6yBivf>
- Rojas MFM, Ayala JMT, Cuéllar VJJ, Mendoza RMA, Aleman ACA. Calidad de vida en pacientes con diabetes mellitus tipo 2 en tratamiento con insulina. *Aten Fam* [Internet]. 2021; [Citado 27 abr 2022]. 28(4): 275-279. Disponible en: <https://www.medigraphic.com/pdfs/atefam/af-2021/af214f.pdf>
- Guzmán PCG, Baeza-Flores GC, Guzmán-León R, Torres-López JE, Ordaz-Cancelario KK, Muñoz-Cano JM. Calidad de vida en los pacientes con DM-2: Un estudio transversal en el sureste mexicano. *ARS Revista de Ciencias Médicas* [Internet]. 2020; [Citado 25 oct 2022]. 45(1): 67-73. Disponible en: <https://acortar.link/Pw8EaS>
- Britez M, Torres E. Calidad de vida en pacientes con diabetes mellitus tipo 2. *Rev Nac (Itauguá)* [Internet]. 2017; [Citado 27 jun 2019]. 9(1): 78-91. Disponible en: <https://n9.cl/1ta5o>
- Varillas CSB. Calidad de vida de los pacientes con diabetes mellitus tipo II e insuficiencia renal crónica en el servicio de consulta externa Hospital Octavio Mongrut - 2015. [Internet]. Lima: Universidad Nacional Mayor de San Marcos; 2015 [Citado 20 jun 2020]. Disponible en: <https://n9.cl/jif3c>
- Ñique OY, Manchay PH. Calidad de vida en personas con diabetes mellitus tipo 2 que acuden al consultorio externo de endocrinología del Hospital Nacional Sergio Bernales, Comas - 2018. [Internet]. Lima: Universidad de Ciencias y Humanidades; 2018. [Citado 27 jun de 2020]. Disponible en: <https://tinyurl.com/yxycydj4>
- Mejía BEB, Pico MME. Calidad de vida relacionada con la salud (CVRS) en adultos mayores de 60 años: una aproximación teórica. *Hacia Prom Salud*. [Internet]. 2007; [Citado 27 abr 2022]. 12:11-24. Disponible en: <https://www.redalyc.org/articulo.oa?id=309126689002>
- Cornejo BW. Calidad de vida. *Rev enferm vanguard* [Internet]. 2016. [Citado 27 de abr. 2022]. 4(2): 56-75. Disponible en: <https://tinyurl.com/y4ygn666>
- Quintanar GA. Análisis de la calidad de vida en adultos mayores del Municipio de Tetepango, Hidalgo: A través del instrumento WHOQOL-BREF. [Internet]. Actopan: Universidad Autónoma del Estado de Hidalgo; 2010. [Citado 15 jul 2019]. Disponible en: <https://catalog.ihns.org/citations/35462>
- Mendoza GNM, Roncal CK. Calidad de vida del adulto mayor en el Centro de Salud Callao, Callao - 2016. [Internet]. Lima: Universidad de Ciencia y Humanidades; 2018. [Citado 15 jul 2019]. Disponible en: <https://repositorio.uch.edu.pe/handle/20.500.12872/195>
- Luxardo N. El cuerpo medido. Escalas y mediciones de la calidad de vida de personas con cáncer. [Internet]. 2007. [Citado 15 jul. 2019]. Disponible en: <https://n9.cl/2pme>
- Servicio Andaluz de Salud. Escala de calidad de vida WHOQOL-BREF. [Internet]. 2010. [Citado 02 jul. 2019]. Disponible en: <https://n9.cl/oie5>
- Organización Panamericana de la Salud [Internet]. Perú: Respuesta a la emergencia por COVID-19 en Perú; 2021; [Citado 07 abr. 2022]. Disponible en: <https://acortar.link/IXLE4B>
- Zevallos SE, Cruzado BJ, Avalos RR. COVID-19; Perú a los 100 días, breve observación de una pandemia que pone en serios aprietos a la salud pública mundial. *Rev Med Hered*. [Internet]. 2020; [Citado 07 abr 2022] 31(4). Disponible en: <https://acortar.link/LKAL8C>
- Urzúa MA, Caqueo-Urizar A. Calidad de vida: Una revisión teórica del concepto. *Ter psicol*. [Internet]. 2012; [Citado 27 jun. 2019]. 30(1): 61-71. Disponible en: <https://n9.cl/jwetr>
- Organización Mundial de la Salud [Internet]. Temas de salud: diabetes. OMS: abril 5 de 2023; [Citado 30 abr. 2024]. Disponible en: <https://www.who.int/es/news-room/factsheets/detail/diabetes>
- Punthakee Z, Goldenberg R, Katz P. Definition, Classification and Diagnosis of Diabetes, Prediabetes and Metabolic Syndrome. *Can J Diabetes*. [Internet]. 2018; [Citado 01 jun. 2022]. 42:10-15. Disponible en: <https://acortar.link/NDOSPt>





32.Salazar VAAL, Jiménez CM. Calidad de vida en pacientes con diabetes mellitus tipo 2 que acuden a un establecimiento de salud en comas, lima 2022. [Internet]. Lima: Universidad María Auxiliadora. 2022. [Citado 25 oct. 2022]. Disponible en: <https://acortar.link/3ztEBM>

33.Martinez R, Morsch P, Soliz P, Hommes C, Ordunez P, Vega E. Life expectancy, healthy life expectancy, and burden of disease in older people in the Americas, 1990–2019: a population-based study. Rev Panam Salud Publica. [Internet]. 2021; [citado 28 mar. 2022] 45(1): 1-14. Disponible en: <https://doi.org/10.26633/RPSP.2021.114>

34.Salazar EJG, Torres LTM, Pando BM, Aranda BC, Zúñiga NE. Dimensiones conceptuales sobre calidad de vida en estudiantes de psicología, México. RIP. [Internet]. 2011; [Citado 02 jul. 2019]. 4(1):47-58. Disponible en: <https://n9.cl/gx2z>

35.Naranjo HY, Concepción PJA, Ávila SM. Adaptación de la teoría de Dorothea Orem a personas con diabetes mellitus complicada con úlcera neuropática. Rev Cubana Enfermer. España. [Internet]. 2019. [Citado 04 dic. 2022]. 35(1) Disponible en: <https://acortar.link/5jztCS>